



📍 5 Sorrel Street, Calne, Wiltshire, SN11 8JW

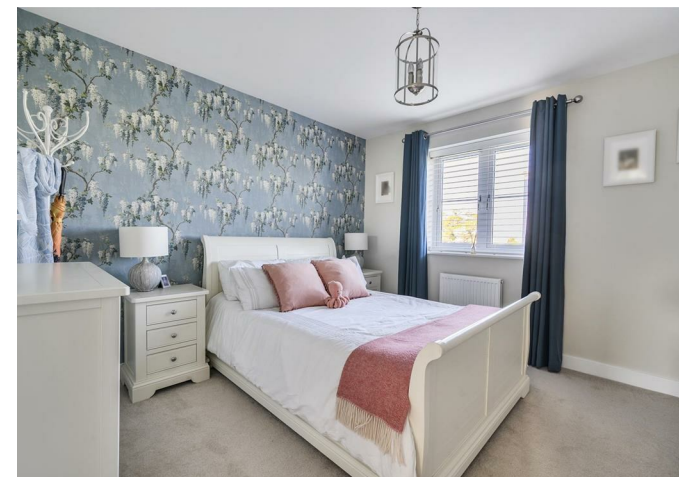
🔗 Offers Invited £315,000

A stunning, spacious three-bedroom end-of-terrace home, recently built and finished to an exceptional standard. With a double carport, enclosed rear garden, and open front aspect, it's ideally located near local amenities and Calne town centre. Immaculately maintained, this is a superb, move-in-ready home.

- Stunning Three Bedroom End of Terrace Home
- Recently Built and Finished to an Exceptional Standard
- Spacious and Well Balanced Accommodation Throughout
- Three Well Proportioned Bedrooms
- Principal Bedroom with En-Suite Shower Room
- Quiet and Desirable Residential Location
- Beautifully Landscaped Enclosed Rear Garden
- Rear Access to Double Carport
- Pleasant Front Garden with Open Aspect
- Conveniently located near local amenities and Calne town centre

🏠 Freehold

🏠 EPC Rating B



A truly stunning, spacious three-bedroom end of terrace home, recently built and presented to an exceptional standard. The property features a double carport and a beautifully enclosed rear garden, while enjoying an open aspect to the front. Ideally located within easy reach of local amenities and Calne town centre, it offers both convenience and a peaceful setting. Immaculately maintained by the current owner, this home represents a superb opportunity for buyers seeking a high-quality, move-in-ready property.

Well-balanced accommodation comprises a welcoming entrance hall with WC, a spacious dual-aspect kitchen/diner with integrated appliances, and an exceptionally large sitting room with doors opening to the rear garden. Upstairs offers three well-proportioned bedrooms, a modern family bathroom with shower over bath, and a principal bedroom with en-suite.

Externally, the property boasts a beautifully landscaped, enclosed rear garden with a pergola seating area, patio, and lawn. Rear access leads to a double carport, while the front features a front garden enjoying an open aspect.

Situation

Situated to the north of Calne town centre, the property forms part of a modern residential development with attractive green spaces and easy access to surrounding countryside, ideal for scenic walks. Calne itself offers a charming Heritage Quarter, including a Norman church, Merchant's Green, the picturesque Church Street with its quaint shops, and the River Marden.

Property Information

Council Tax Band; D

Freehold

Mains Services

Gas Central Heating

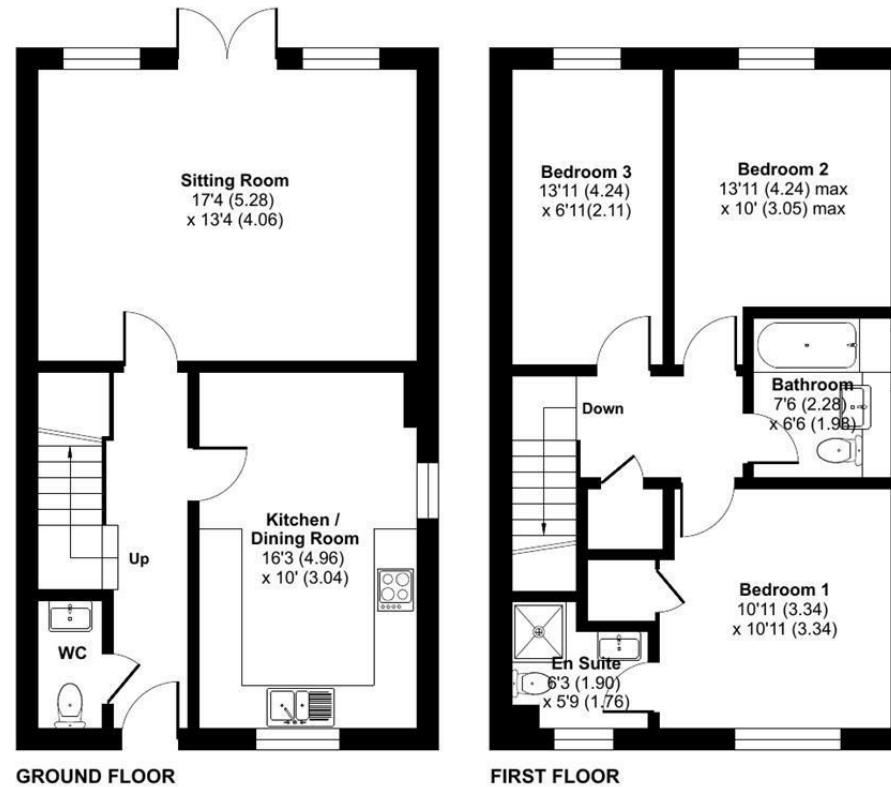
EPC Rating; B



Sorrel Street, Calne, SN11

Approximate Area = 1042 sq ft / 96.8 sq m

For identification only - Not to scale



 Floor plan produced in accordance with RICS Property Measurement 2nd Edition, Incorporating International Property Measurement Standards (IPMS2 Residential). © ncthecom 2026. Produced for Strakers. REF: 1449270

Disclaimer These particulars, whilst believed to be accurate are set out as a general outline only for guidance and do not constitute any part of an offer or contract. Intending purchasers should not rely on them as statements of representation of fact, but must satisfy themselves by inspection or otherwise as to their accuracy. No person in this firm's employment has the authority to make or give any representation or warranty in respect of the property. All measurements and distances are approximate only. Your home is at risk if you do not keep up repayments on a mortgage or other loan secured on it.